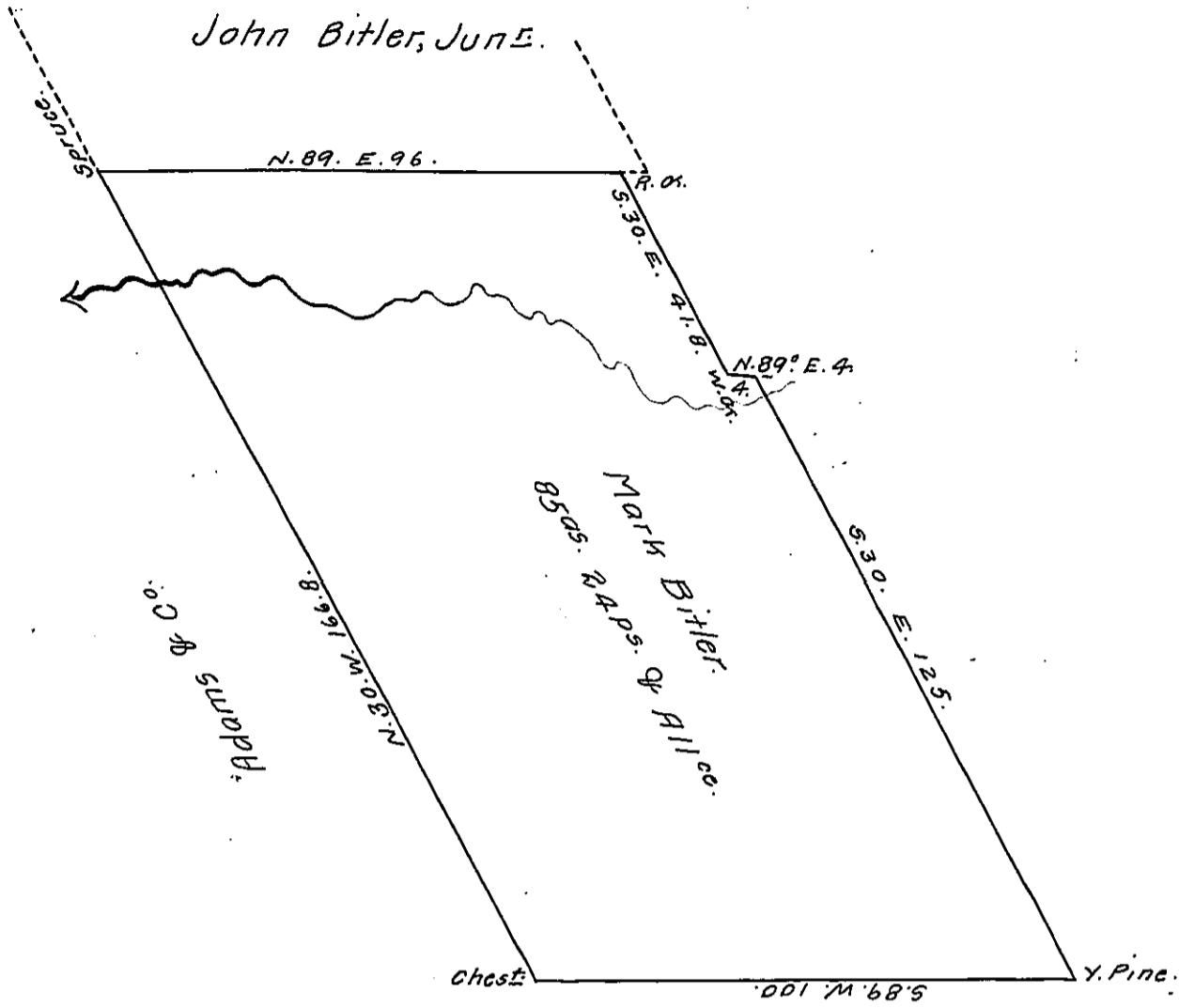


F. 41-279

John Bitler, June.



A draft of a tract of land (unimproved) situate in Sugar Loaf Township, Luzerne County containing eighty five acres and twenty four perches & and the usual allowance &c. Surveyed for Mark Bitler the 11th day of November, A.D., 1815. By virtue of a Warrant dated the fifth day of June, 1815.

Richd T. Leech, Esqr,
 Surveyor Genl. of Pennsy^a.



John Bennet, D.S.

IN TESTIMONY that the above is a copy of the original remaining on file in the Department of Internal Affairs of Pennsylvania, made conformably to an Act of Assembly approved the 16th day of February, 1833, I have hereunto set my Hand and caused the Seal of said Department to be affixed at Harrisburg, this twenty fifth day of September, 1911.

Henry Houck
 Secretary of Internal Affairs.